

1

2

3

4

5

6

7

E

D

C

B

A

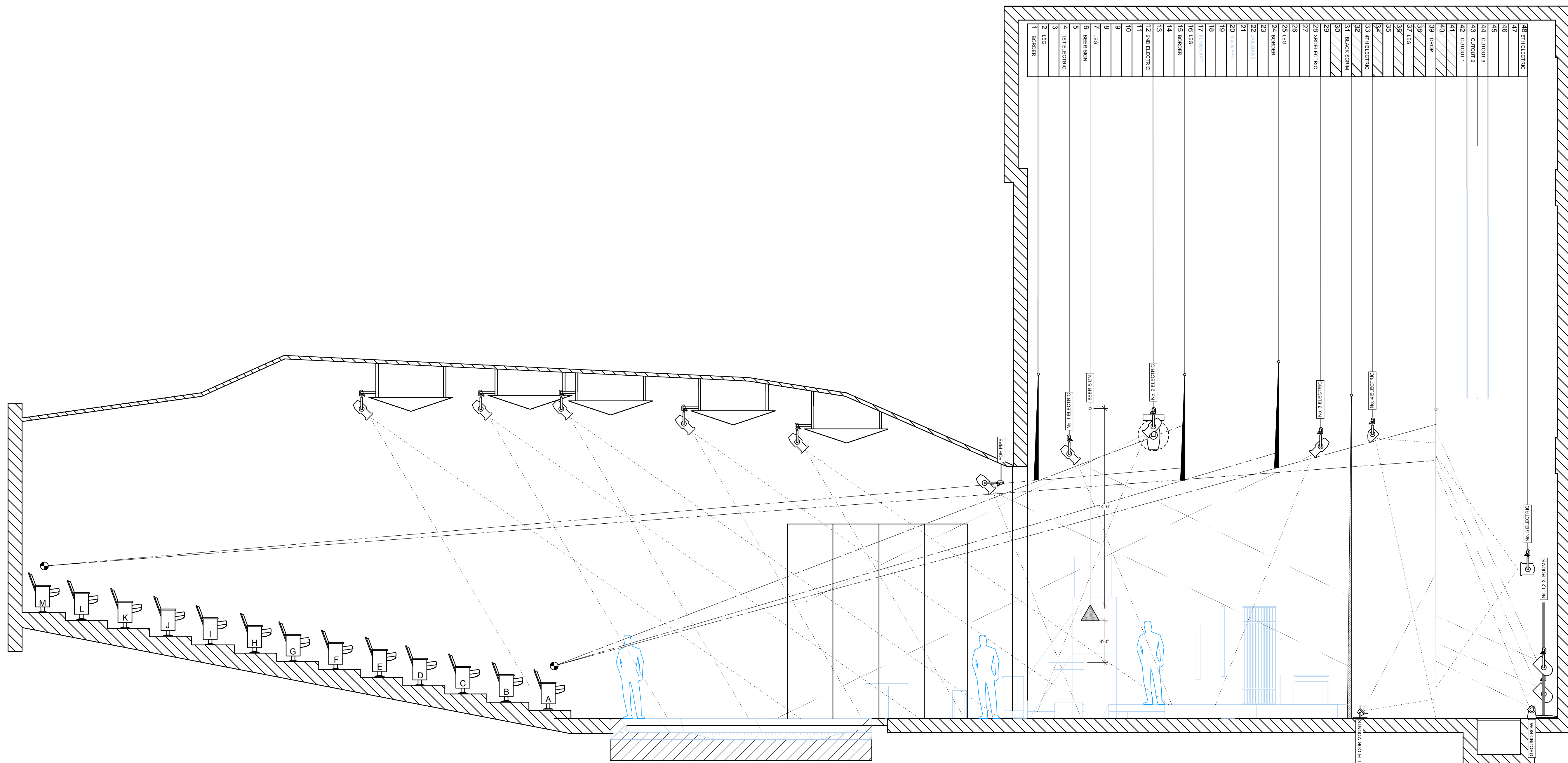
E

D

C

B

A



### KEY

	VL 3000 SPOT	1200w
	19' ETC S4	575w
	26' ETC S4	575w
	36' ETC S4	575w
	50' ETC S4	575w
	ETC S4 PAR (WFL)	750w
	ETC S4 (MFL)	750w
	ETC S4 PARnel	750w
	PAR 64 (WFL)	1000w
	8' FRESNEL	1000w
	L & E MICRO FLOOD	200w
	BIRDIE	75w EYC
	PRACTICAL	60w
	4 CIRCUIT, 20 LAMP MR16 STRIPLIGHT	75w EYC
	3 CIRCUIT, 6 CELL COLORTRAN CYCSTRIP	500w PER CELL

### LEGEND

	UNIT NUMBER
	COLOR
	CHANNEL
	UNIT w/ A SIZE GOBO
	UNIT w/ APOLLO SMART MOVE DMX GOBO ROTATOR
	UNIT w/ FOUR-WAY BARNDOOR
	UNIT w/ TOP HAT
	UNIT w/ HALF HAT

### NOTES

- CIRCUITING PER PRODUCTION ELECTRICIAN
- NO SUBSTITUTIONS WITHOUT DESIGNER'S APPROVAL
- REFER TO INSTRUMENT SCHEDULE FOR GOBO INFORMATION
- EXCEPT WHERE NOTED, ALL FIXTURES HANG ON 18" CENTERS
- ALL TRIM HEIGHTS LISTED ARE FROM THE TOP OF THE SHOW DECK TO THE CENTER OF THE HANGING PIPE
- ALL TRIM HEIGHTS ARE PRELIMINARY AND ARE SUBJECT TO CHANGE ONSITE
- LINE SET 6 FLIES IN AND OUT DURING PERFORMANCES
- STOCK OF R 119 NEEDED FOR FOCUS

UNIVERSITY OF FLORIDA

# AMERICAN WESTERN

**SIDE SECTION** PLATE 2 OF 2

LIGHTING DESIGNER:  
**MICHAEL L. ASCHENBACH**

MASTER ELECTRICIAN: PRICE JOHNSTON  
DIRECTOR: KEVIN MARSHALL  
SCENIC DESIGNER: CHRISTINA GONZALAS  
COSTUME DESIGNER: D.K. SHAFFER  
SOUND DESIGNER: CHIP PERRY

H. P. CONSTANS THEATRE  
SCHOOL OF THEATRE AND DANCE

SCALE: 1/4" = 10"      FEBRUARY, 2007

1

2

3

4

5

6

7